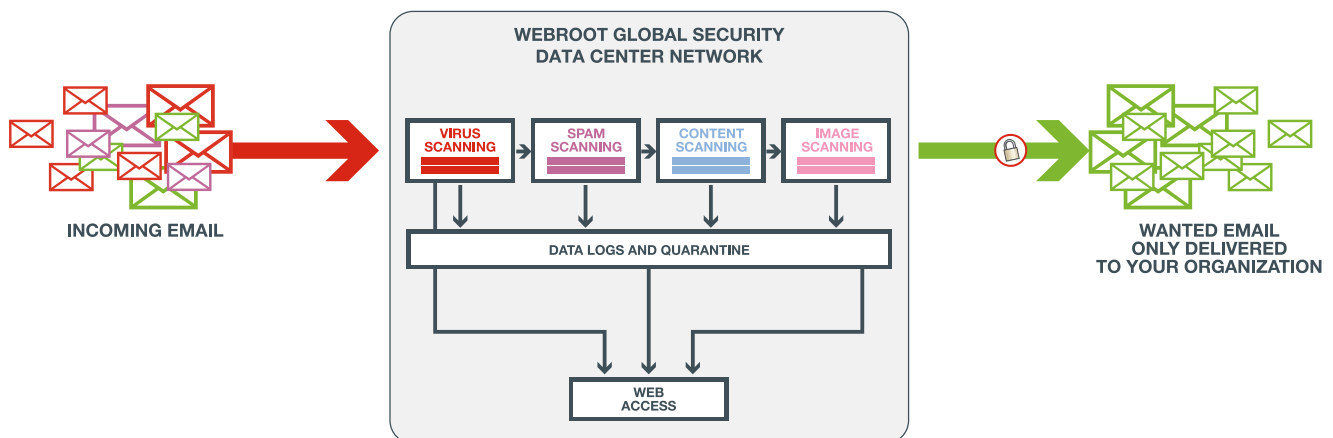


Webroot® E-mail Security SaaS

In 2008, over 6.62 trillion business e-mails will be exchanged.¹ With spam accounting for close to 90 percent of this total, and consistently growing in volume, e-mail delivery systems and IT resources are continually strained. Additionally, as companies attempt to address the current data security and compliance standards to mitigate data loss and legal liability, it is clear the management, protection and value of an e-mail security solution is increasingly important to a companies' overall security strategy.

Webroot E-Mail Security SaaS	
Benefit	Proof
Increased IT Capacity and Efficiency	<ul style="list-style-type: none"> → Pay-for-use model provides ability to scale easily to accommodate growth → Managed service reduces resource strain and increases IT capacity → Fast, low risk service deployment
Improved Manageability and Reporting	<ul style="list-style-type: none"> → No hardware or software updates to manage → Web-based admin panel and summary dashboard offers total visibility, control and flexibility → On-demand, customizable reports demonstrate effectiveness and ROI
Increased Data Security and Compliance	<ul style="list-style-type: none"> → In and outbound content and file type scanning → Pre-defined compliance dictionaries to help meet data security and compliance concerns
Lower Total Cost of Ownership	<ul style="list-style-type: none"> → No hardware or software to purchase or manage → Predictable operating costs → Integrated suite of e-mail protection, management and compliance services
Effective and Reliable	<ul style="list-style-type: none"> → Protects against 98% of spam and 100% of known viruses → Support available 24x7x365 → 99.999% uptime guarantee



¹ IDC, 2007

Advanced Capabilities and Award-Winning Technology

Webroot E-Mail Security SaaS is a security service that resides outside your network, requiring no additional hardware, software, or personnel resources to manage daily security operations. It provides award winning in-the-cloud e-mail management, protection and compliance services for more than 3 million mailboxes worldwide.

This powerful, flexible offering includes dynamic virus and spam filters to protect against 98% of e-mail spam and 100% of known viruses. Webroot's content filtering and data archiving capabilities prevent against data loss and help to fulfill compliance, data security and data storage requirements.

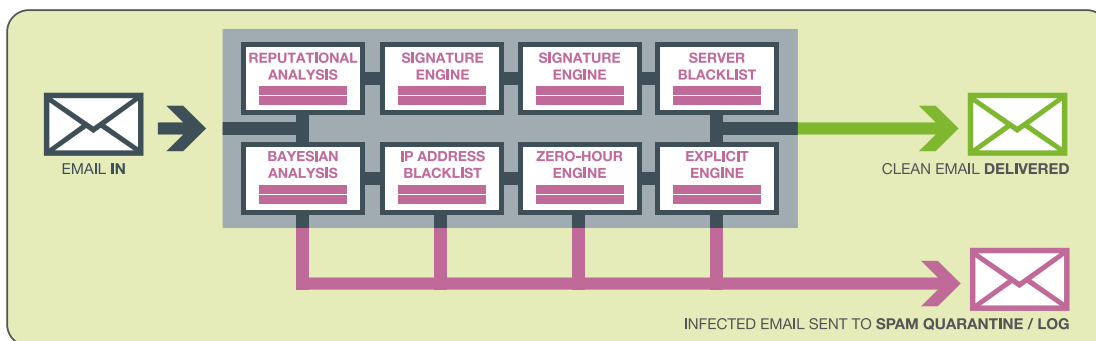
Fast Deployment and Guaranteed Service Availability

Customer deployment can be complete in one to four days and there are no costly hardware or equipment maintenance fees. Webroot also guarantees a 99.999% service availability to ensure that customers have access to a secure e-mail communications environment.

Spam and Phishing Protection

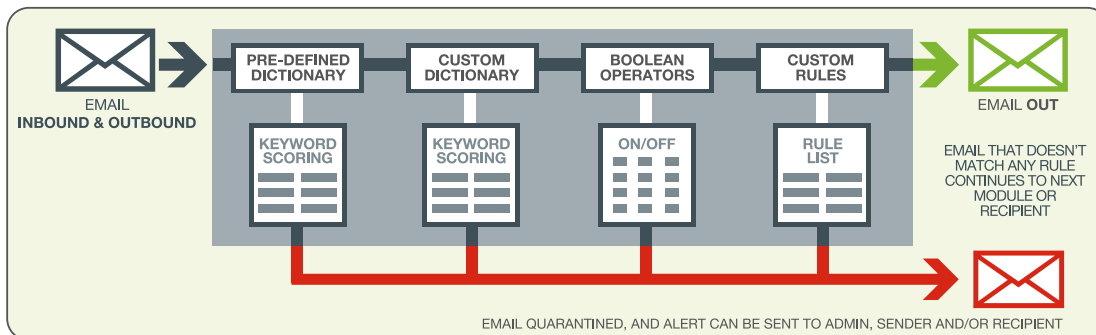
With spam accounting for close to 90 percent of all e-mail, and consistently growing in volume, e-mail delivery systems and personnel resources are continually strained. Webroot E-Mail Security SaaS can help by eliminating this unwanted traffic before it reaches company mail servers. With seven different levels of spam detection and multiple best of breed e-mail filters, Webroot guarantees elimination of 98% of all spam.

To provide additional protection against spam and phishing attacks, Webroot E-Mail Security SaaS is the only solution specifically designed to quantify sender reputation via advanced statistical models. Unlike other reputation services that provide only a binary 'good' or 'bad' rating, Webroot provides granular trust ratings with automated adjustment over time as reputations change. By focusing reputation on mathematical models, rather than simply a blacklist approach, language-agnostic detection can be more accurate and highly scalable.



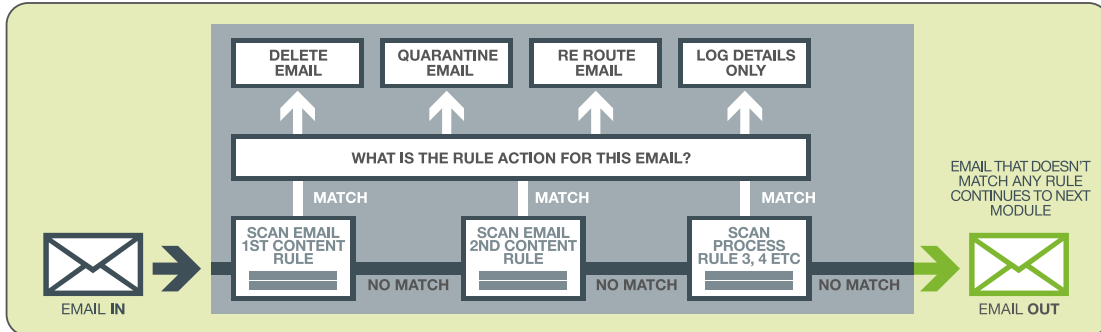
Data and Security Compliance

Webroot E-Mail Security SaaS supports pre-defined and custom dictionaries of regular expressions and keywords to aid in detecting and controlling messages with sensitive or inappropriate content. Dictionaries also support ability to assign numerical values to keyword entries, such that rather than simple keyword matching, keyword scoring can trigger custom rules once pre-defined thresholds are met or exceeded. E-mail account administrators can also use Boolean operators to create custom rules by combining subsets or supersets of dictionaries. Pre-configured dictionaries include key terms to help companies develop e-mail policies to comply with HIPAA, GLBA, PCI-DSS, and other regulatory compliance measures.



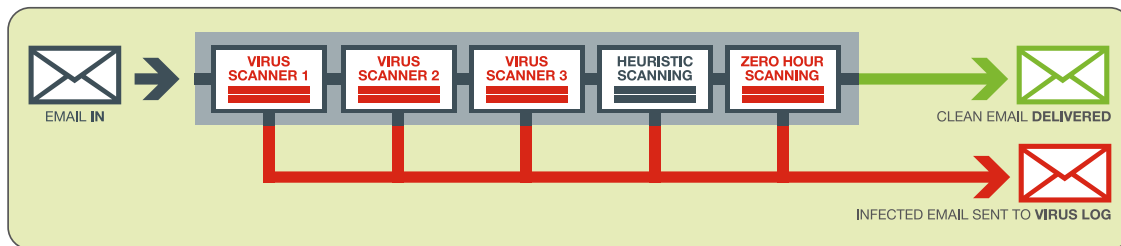
Content Control

The Webroot E-Mail Security SaaS content control management suite offers a powerful, customizable rules engine, which facilitates both content and event-based e-mail management while providing highly granular levels of control around inbound and outbound e-mail traffic. The service allows users to control where messages are sent and how they should be filtered based on specified criteria. Rules can be set for a number of different situations, either as an individual occurrence or as a combination of complex business events. Besides standard e-mail actions such as block, copy, and redirect, rules can be used to alert or trigger other systems such as HR, CRM, ERP or workflow.



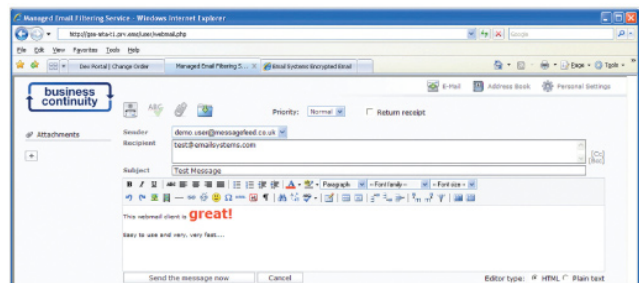
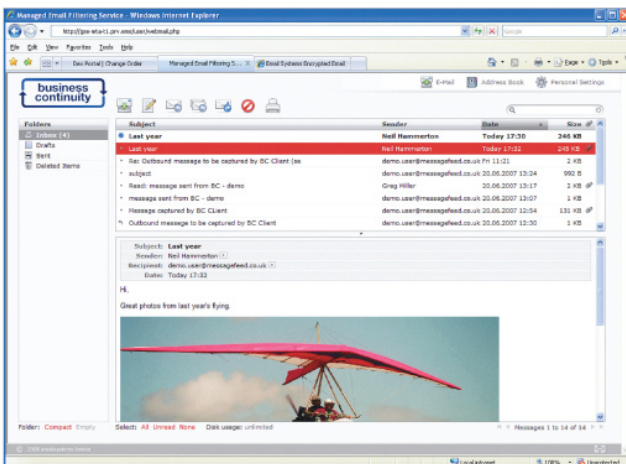
Virus Protection

Webroot E-Mail Security SaaS incorporates five best of breed signature, heuristic and zero-day engines to provide unmatched detection of known and unknown viruses. Multiple identity-based engines guarantee protection against 100% of known virus threats. However, as viruses tend to replicate and distribute at high speed, Webroot E-Mail Security SaaS employs zero-day and heuristic virus filters to seek out and block new threats before they can infect your company's network environment. .



Business Continuity Service

While most Business Continuity solutions only kick-in when a disaster occurs, Webroot E-Mail Security SaaS provides "always available" capabilities, ensuring that off-site resources are constantly active during normal operation as well as when disaster hits. This service enables 28 days of inbound and outbound e-mail to be available from secure, mirrored data stores to end users via a webmail portal. This portal allows users to send and receive e-mail from any browser worldwide, ensuring important business communication is not lost during periods of downtime.



Encryption

Despite e-mail being the most important form of business communication, it is inherently insecure with data being most vulnerable while it is in transit. To help protect email data in transit, Webroot E-Mail Security SaaS provides an open standard encryption mechanism with no hardware or software to purchase or maintain. Encryption services are provided using Transport Layer Security (TLS), a transparent mechanism for encrypting data on a peer-to-peer basis, such as between messaging servers.

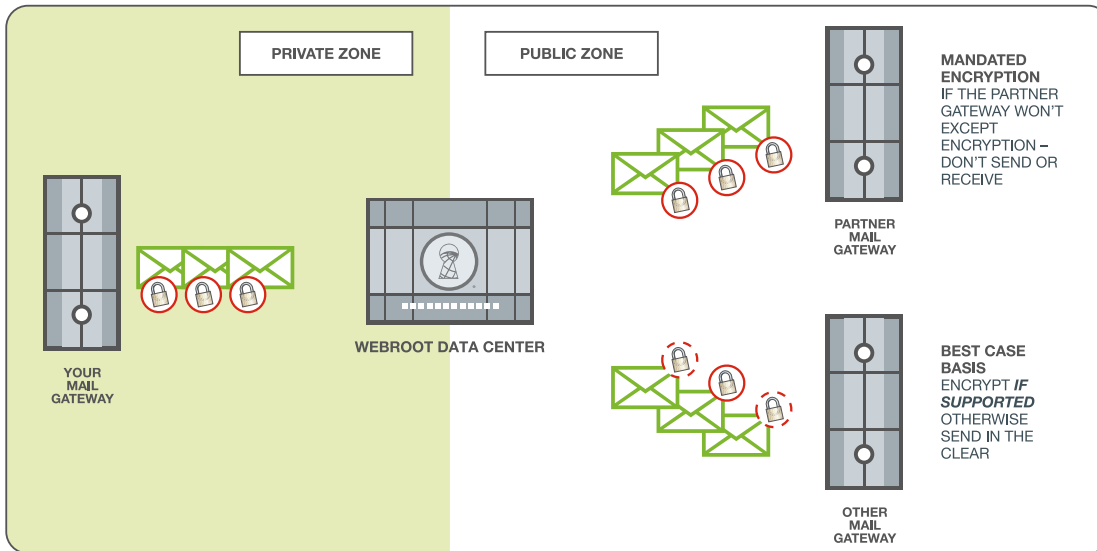
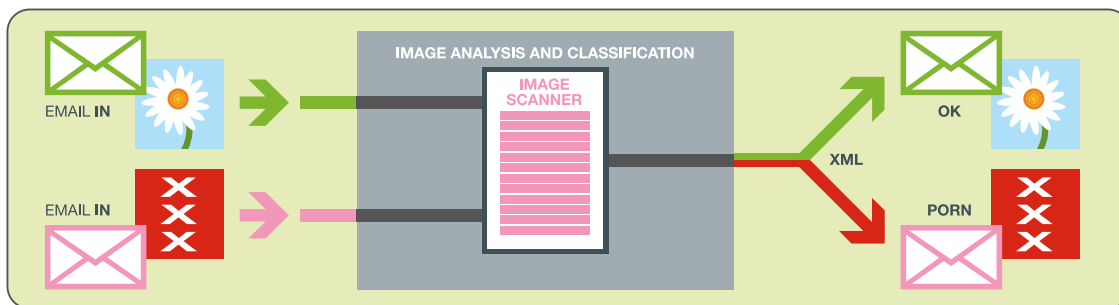


Image Protection

Increasingly, employers recognize that they have a professional obligation to minimize employee exposure to distasteful and offensive images coming to their inbox. Consequently, Webroot provides a filter specifically to address image analysis. When images are scanned, their dataflow (shape, color, texture, etc.) is converted into a digital signature which is then compared against known pornographic images. If the image is similar to those blacklisted images, the e-mail content is classified as pornographic and action may be taken to either delete or quarantine the e-mail. All messages containing suspect images are logged.



Archiving

As an enhancement to the core service, Webroot E-Mail Security SaaS provides an archiving service to enable organizations with the ability to securely capture, store, and index all inbound and outbound e-mail traffic in real-time. Once captured, these e-mails are stored in duplicate and geographically disparate data centers, thus protecting data against physical loss or corruption.

Webroot Software, Inc. – World Headquarters
 2560 55th Street
 Boulder CO 80301 USA
www.webroot.com • 800.870.8102

Webroot Ltd. – EMEA Headquarters
 Cart Lodge, Squerryes, Goodley Stock Road
 Westerham, Kent TN16 1SL, UK
www.webroot.com/uk • +44 (0)870 1417 070

Webroot Software Pty Ltd. – APAC Headquarters
 Level 11, Tower B, 821 Pacific Highway
 Chatswood NSW 2067 Australia
www.webroot.com • +61 (0)2 8448 8144 • 1.800.029.234

© 2008 All rights reserved. Webroot Software, Inc. Webroot, the Webroot icon, and the Webroot tagline are trademarks or registered trademarks of Webroot Software, Inc. in the United States and other countries. All other trademarks are properties of their respective owners. NO WARRANTY. Analysis based on research conducted by Webroot Software, Inc. The information is provided AS-IS and Webroot makes no warranty as to its accuracy or use. Any use of the technical documentation or the information contained herein is at your own risk. Documentation may include technical or other inaccuracies or typographical errors. Webroot reserves the right to make changes without prior notice. Certain data is available upon request.